

# Architectural Powder Coatings Color Guide



## A full line of tough, durable and colorful architectural extrusion and panel coatings

PPG's full line of advanced powder coatings offer a combination of performance and value for virtually any architectural application. PPG makes four brands of architectural powder coatings that, together, cover all three major AAMA performance specifications for architectural coatings.

|                           | ENVIROCRON® 03         | <i>Envirocron</i> 04    | CORAFLO® Powder    | DURANAR® Powder    |
|---------------------------|------------------------|-------------------------|--------------------|--------------------|
| <b>AAMA Specification</b> | AAMA 2603              | AAMA 2604               | AAMA 2605          | AAMA 2605          |
| <b>Resin Quality</b>      | Standard Polyester     | Ultra-Durable Polyester | FEVE Fluoropolymer | PVDF Fluoropolymer |
| <b>Coating Layers*</b>    | One coat               | One or two coats        | One or two coats   | Two coats          |
| <b>Seacoast Coverage</b>  | No                     | Yes, with primer        | Yes, with primer   | Yes                |
|                           | Low, Medium, High      | Low, Medium, High       | 20-70              | 20-30              |
| <b>Appearance</b>         | Solids, Mica, Metallic | Solids, Mica, Metallic  | Solids, Mica       | Solids             |

\* *Coraflo* and *Envirocron* coatings are available with liquid and powder primers for severe environments.

### ***Envirocron* 03 Durable Polyester Powder**

With a durable polyester formulation that meets AAMA 2603 specifications, *Envirocron* 03 powder coatings are available in a broad range of solid colors, mica and metallic pigments, and textured finishes, making them ideal for aluminum residential window and door frames, railings, trim, and interior applications. The coatings provide good film integrity, impact and mar resistance, and color control.

### ***Envirocron* 04 Ultra-Durable Polyester Powder**

*Envirocron* 04 ultra-durable powder coatings use a more robust resin and pigment system than *Envirocron* 03 coatings, meeting AAMA 2604 specifications in a wide range of colors, glosses, and mica and metallic effects. The added durability makes them an excellent choice for high-end residential and light commercial buildings with high-traffic environments.

### ***Coraflo* FEVE Fluoropolymer Powder**

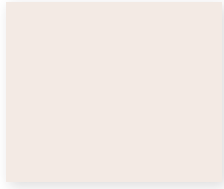
*Coraflo* powder coatings are formulated to provide exceptional UV durability, colorfastness, and gloss retention. Available in satin and high-luster glosses, including solids and micas, *Coraflo* powder coatings have the unique ability to adhere directly to metal as a one-coat paint system or as a two-coat system with a primer for harsh environments. *Coraflo* coatings make an excellent choice for curtain walls, storefronts, and other highly visible, high-end monumental applications.

### ***Duranar* 70% PVDF Fluoropolymer Powder**

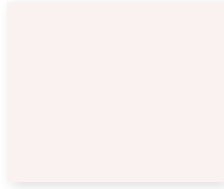
The renowned *Duranar* line of coatings are now available in a powder formulation, offering unparalleled resilience on storefronts, curtain walls, windows and louvers in a wide range of earth-tone solid colors. Our highest performing product always utilizes a liquid or powder primer, making it the best choice for severe seacoast environments. The coating is chemically inert, offering exceptional resistance to chemical attack and surface damage caused by acid rain, salt, mortar deposits, humidity, and graffiti – all while retaining color and gloss over decades of weather exposure.

## CORAFLOX SOLID COLORS

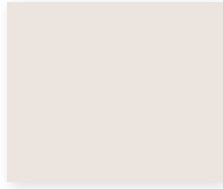
Also available for *Duranar* and *Envirocron* powder coatings.\*



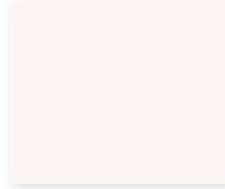
Bone White  
PCNT88101



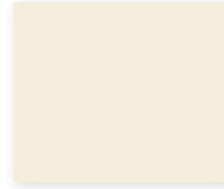
Graham White  
PCNT88104



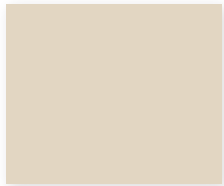
Bone White  
PCNT88147



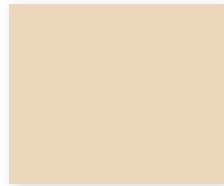
Bright White  
PCNT88148



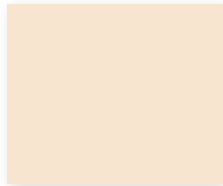
Colonial White  
PCNT88149



Ivory  
PCNT88150



Malt  
PCNT28207



Natural Wicker  
PCNT28208



Caramel Latte  
PCNT28174



Sahara Sand  
PCNT28209



Sandstone  
PCNT28210



Beige  
PCNT28102



Seawolf  
PCNT28211



Antique Bronze  
PCNT28212



Fairview Taupe  
PCNT28128



Cocoa Bean  
PCNT28213



Medium Bronze  
PCNT28214



Bronze  
PCNT28215



Statuary Bronze  
PCNT28216



Bronze  
PCNT28217



Brick Red  
PCNT68116



River Rouge Red  
PCNT68117



Bermuda Blue  
PCNT58113



Interstate Blue  
PCNT59129



Interstate Green  
PCNT49113



Fashion Gray  
PCNT78166



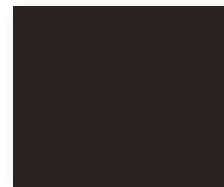
Eclipse Gray  
PCNT78163



Charcoal  
PCNT79121



Charcoal Gray  
PCNT78133



Black  
PCNT98111

# CORAFLOX SUNSTORM® MICA COLORS

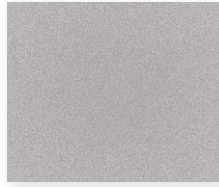
Also available for *Envirocron* powder coatings.\*



Platinum  
PCNT75153



White Ice Metallic  
PCNT75151



Anodic Clear  
PCNT75155



Champagne Metallic  
PCNT75139



Gray Aluminum  
PCNT75138



Bronze  
PCNT75137



Light Bronze  
PCNT25129



Champagne  
PCNT75159



Champagne Gold  
PCNT75140



Arcadia Silver  
PCNT75154



Bronze  
PCNT25130



Champagne Bronze  
PCNT25122



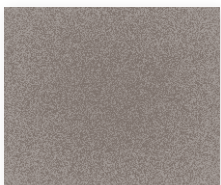
Harvest Gold Pearl  
PCNT25116



Medium Bronze  
PCNT25118



Driftwood Mica  
PCNT25120



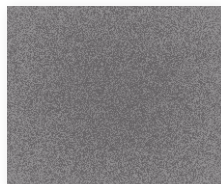
Pewter  
PCNT75163



Medium Bronze  
PCNT25101



Silverstorm  
PCNT75164



Gray Velvet  
PCNT75130



Cosmic Gray Mica  
PCNT75132



Graphite Gray  
PCNT75156





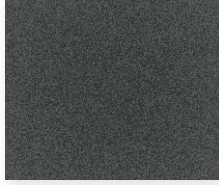
## CORAFLOX SPECIALTY COLORS

Textured and multi-color chips also available for *Duranar* and *Envirocron* powder coatings.\*

### TEXTURED



Terra Cotta Dark  
PCNT39105



Black Flower Tex #5  
PCNT99112

### MULTI-COLOR



Orange Speckle  
PCNT34100



Deep Orange Speckle  
PCNT64104



Black Rust  
PCNT94100

### ANODIC LOOK



Champagne  
PCNT25134



Light Bronze  
PCNT25133



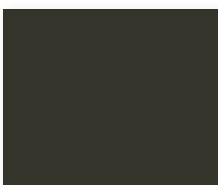
Medium Bronze  
PCNT25131



Bronze  
PCNT25132



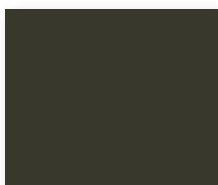
## GLOSS LEVEL EXAMPLES



HIGH GLOSS



MEDIUM GLOSS



LOW GLOSS

**TO ORDER SAMPLES**  
visit [requestppg.com](http://requestppg.com)  
or call 800-258-6398.

\* The color codes for *Duranar* or *Envirocron* powder coatings will differ from what is shown. Ask your PPG representative for more information.

## Color and styling services

PPG has a growing inventory of over 300,000 color formulations and a global staff of color and design experts. All 60 colors on this color card are stocked and available on request.

To learn more about how to make PPG your single-source supplier of architectural powder coatings or to order color cards, literature or sample panels, please visit [requestppg.com](http://requestppg.com) or call 800-258-6398.

## A global partner

PPG is a preeminent supplier of coatings solutions. Through global leadership in innovation, sustainability and color, we help customers in the automotive, aerospace, industrial and construction segments to enhance more surfaces in more ways than any other company. Founded in 1883, PPG has its global headquarters in Pittsburgh, Pennsylvania and operates in more than 70 countries around the world.

Our global manufacturing and product development capabilities ensure that coatings can be manufactured cost-effectively and consistently almost anywhere in the world. We have strategic locations throughout North America, South America, Europe and the Asia/Pacific region, each staffed with knowledgeable sales, technical and manufacturing personnel trained in multiple coating technologies.



## PPG Regional Headquarters

PPG Global Headquarters/  
PPG North America  
Pittsburgh, PA USA  
1.888.774.2001

PPG South America  
Sumare, Sao Paulo, Brazil  
+ 55.19.3864.6000

PPG Europe  
Rolle, Switzerland  
+ 41.21.822.3000

PPG Asia Pacific  
Hong Kong, China  
+ 852.2860.4500

**TO ORDER SAMPLES** visit [requestppg.com](http://requestppg.com) or call 1-800-258-6398.

Custom colors may be ordered on request.

## ABOUT THE PHOTOS

### Norman Y. Mineta San Jose International Airport

San Jose, CA  
*Duramar* Regal White Powder Coatings

### The Tower at PNC Plaza

Pittsburgh, PA  
*Corafon Sunstorm* Powder Coating

Photos of The Tower at PNC Plaza courtesy of Tom Cwenaar.

The color chips in this brochure cannot be considered totally accurate color matches, and are not to be used as approved standards. This document contains general information only and should not be construed as creating any warranties, express or implied. Please contact a PPG representative for additional information. *Corafon*, *Duramar*, *Envirocron*, *Sunstorm* and the PPG logo are registered trademarks. *We protect and beautify the world* is a trademark of PPG Industries Ohio, Inc.

©2017 PPG Industries, Inc. All rights reserved. 04/17 PPG-17

